

Projects Portfolio Management (Microsoft Dataverse)

Overview:

The project involved developing a solution using PowerApps, Microsoft Dataverse for an IT company to develop a project portfolio and manage the whole project of the company under a closed system application. This project helped client to avoid redundancy and pursue easy tracking.

Client details:

Name: Confidential | **Industry:** Information Technology

Technologies:

Office365, PowerApps (Canvas Apps), Ms Dataverse solution, PowerFX, PowerAutomate (For multilevel approvals, CRUD operations in O365), CDS, Microsoft Dataverse

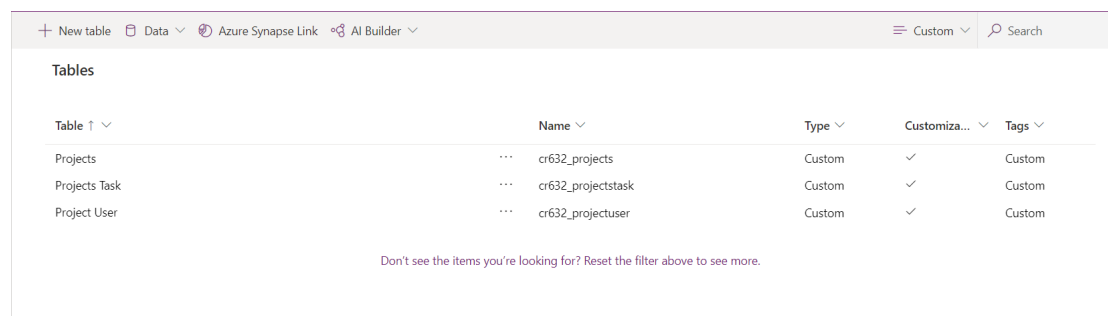
Project Description:

Generally, the client wants to manage his company's project details and can perform all the related works under one application. So that authenticate people can look over the client details, project growth, project status by just clicking the button. For the security reason only respective authenticate people can hands on the application.

The project was successful and Some of the salient features are as follows:

Microsoft Dataverse (Back-end technology):

In this project main works and CRUD operation are performed on Microsoft Dataverse as back-end technology. Here all the data stored on tabular format. We here mainly used 4 tables and create relationship in between them.

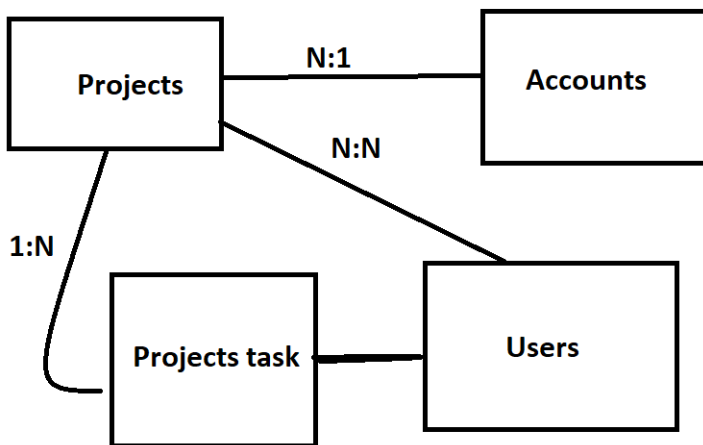


The screenshot shows the Microsoft Dataverse interface. At the top, there are navigation options: '+ New table', 'Data', 'Azure Synapse Link', and 'AI Builder'. On the right, there are 'Custom' and 'Search' options. Below the navigation bar, the 'Tables' section is displayed. It contains a table with the following columns: 'Table', 'Name', 'Type', 'Customiza...', and 'Tags'. The table lists three tables: 'Projects', 'Projects Task', and 'Project User'. Each table has a 'Name' column with a value (e.g., 'cr632_projects'), a 'Type' column with 'Custom', a 'Customiza...' column with a checkmark, and a 'Tags' column with 'Custom'. Below the table, there is a message: 'Don't see the items you're looking for? Reset the filter above to see more.'

Table	Name	Type	Customiza...	Tags
Projects	cr632_projects	Custom	✓	Custom
Projects Task	cr632_projectstask	Custom	✓	Custom
Project User	cr632_projectuser	Custom	✓	Custom

Dataverse Relationship

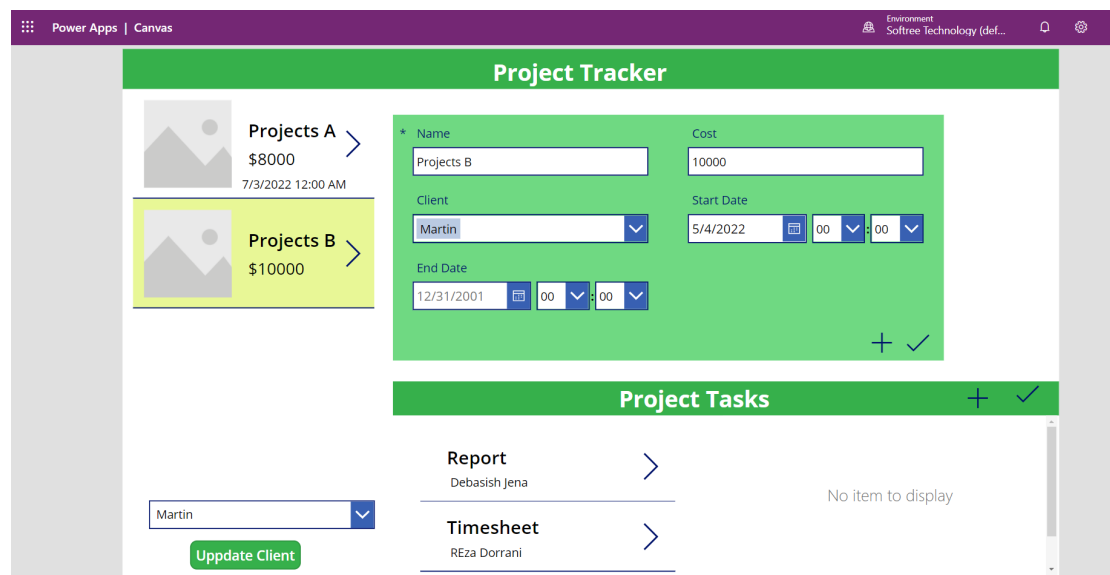
We have created relationship among the dataverse in order to make our task easy and each tables primary key is attached with another tables primary key (Foreign Key for the respective table).



Application screen.

This is the main screen of the application and the functionality is so reach that we are performing all the business logic on this one screen. This is a one screen application.

When user open the screen, by selecting respective projects user can see the whole details of the projects. User can also modify the project details, can update the client details. Here user also can create new task for the employee and can assigned work to the respective employee. Find the attached screen-shorts below for the reference.



This project is successfully completed by using the above mentioned technology, process and it is maintaining the requirement of the client.